

Seattle Stormwater Manual Figure Redlines–

July 2025 Review Draft

Figure Redlines for Volume 1 – Project Minimum Requirements July 2025 Review Draft

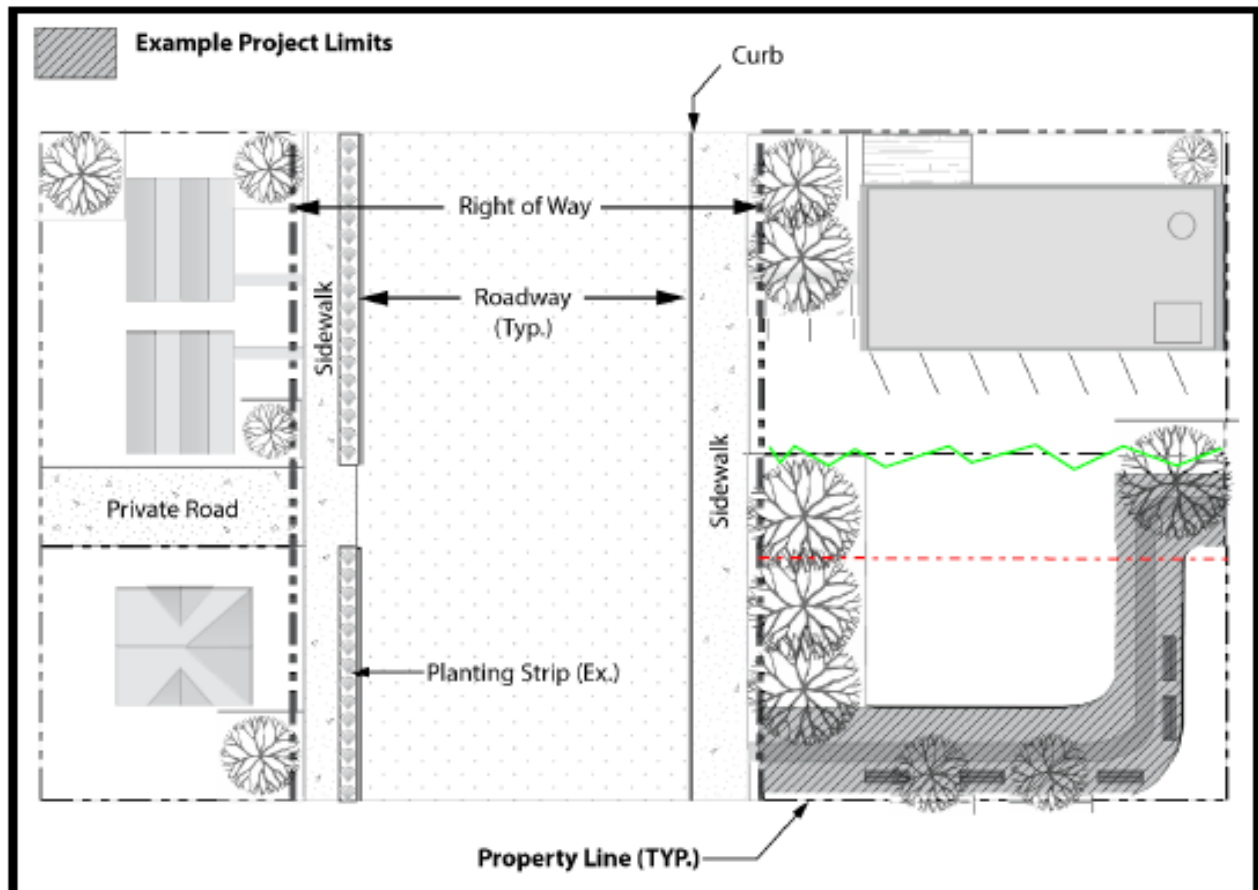


Figure 2.3. Trail Project Definition.

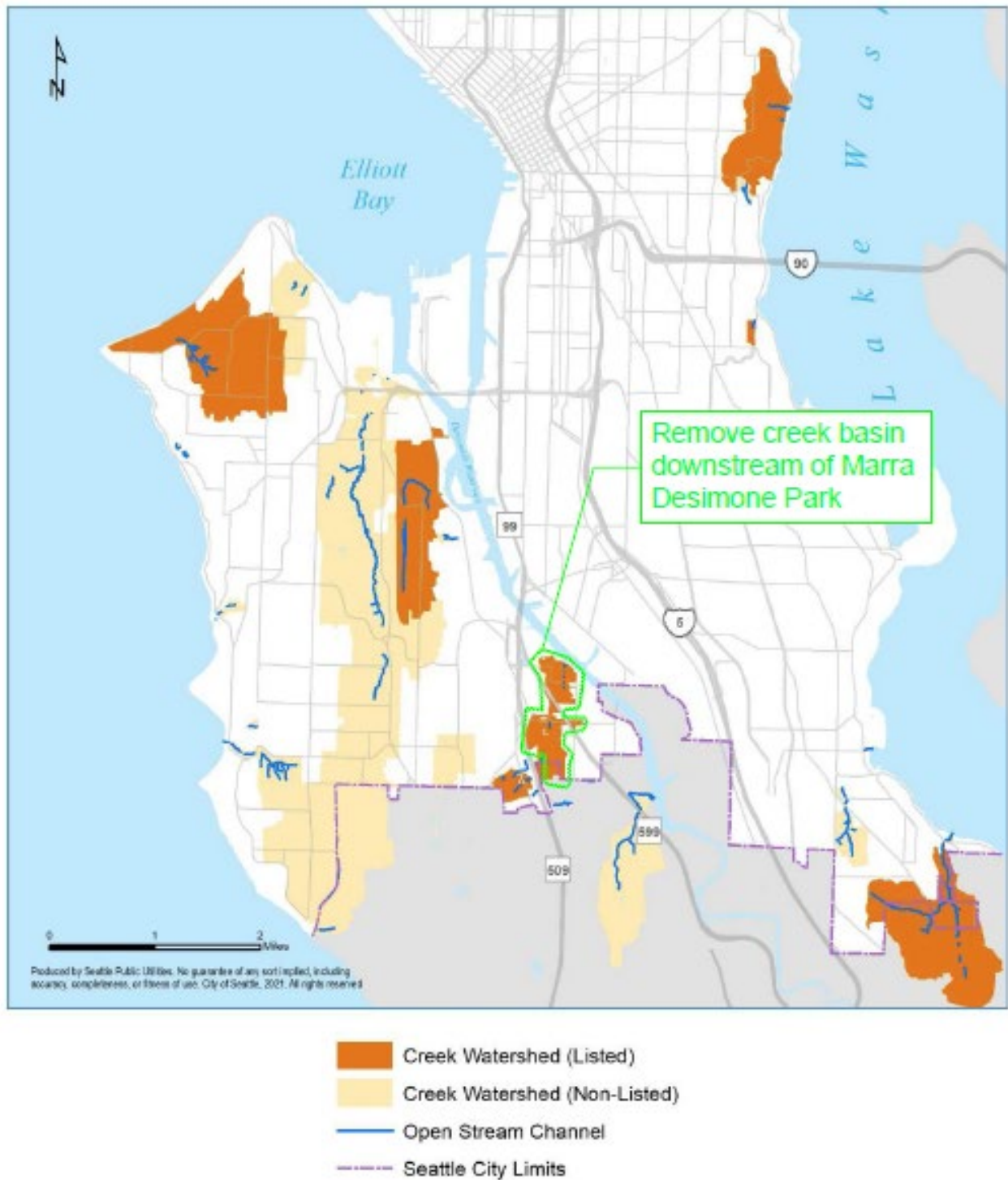


Figure 2.7. South End Creek Basins.

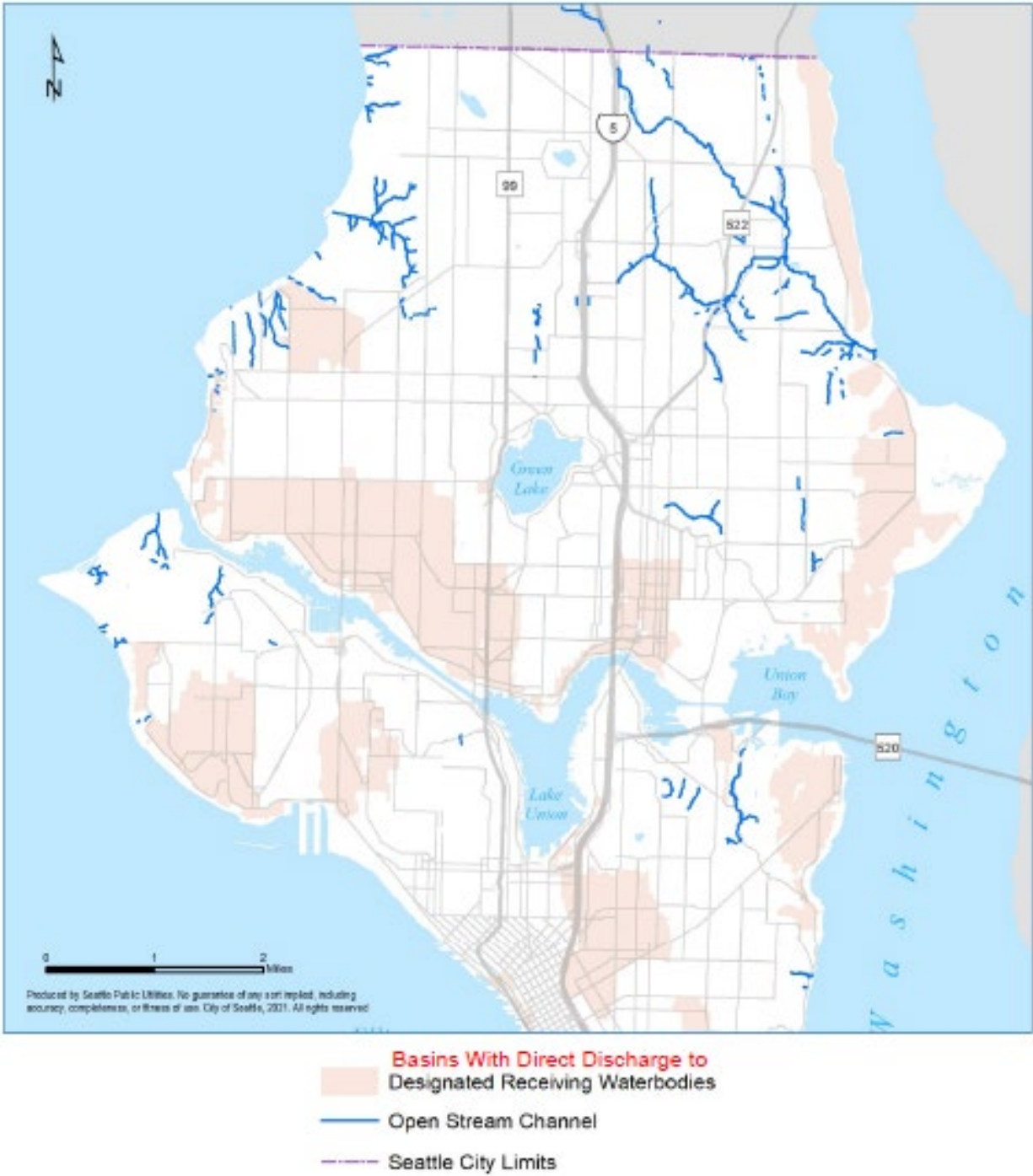
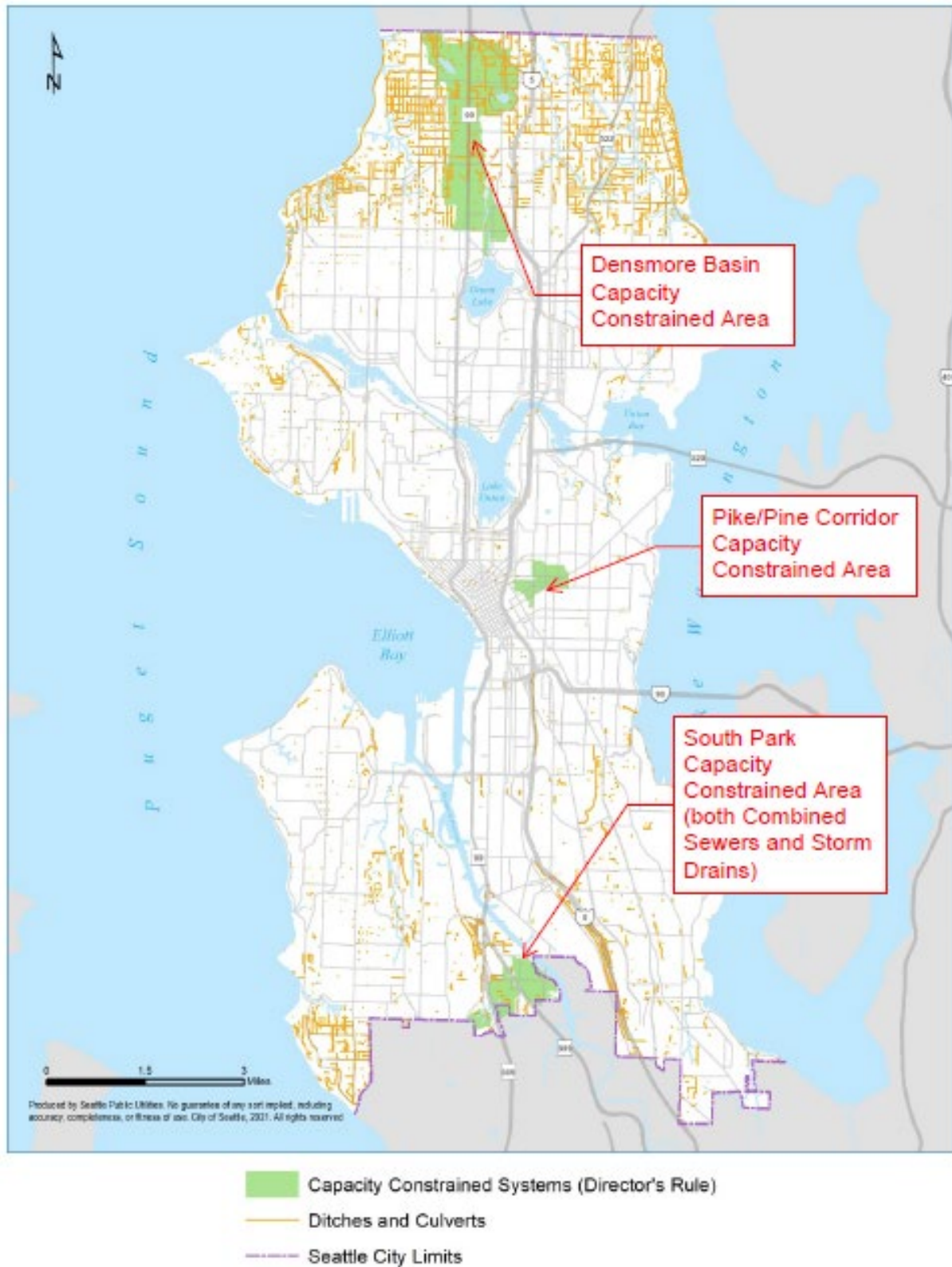


Figure 2.9. North End Designated Receiving Water Drainage Areas.



Figure 2.10. South End Designated Receiving Water Drainage Areas.



Note: All ditches and culverts are considered to be capacity constrained.

Figure 2.11. Capacity Constrained Systems.

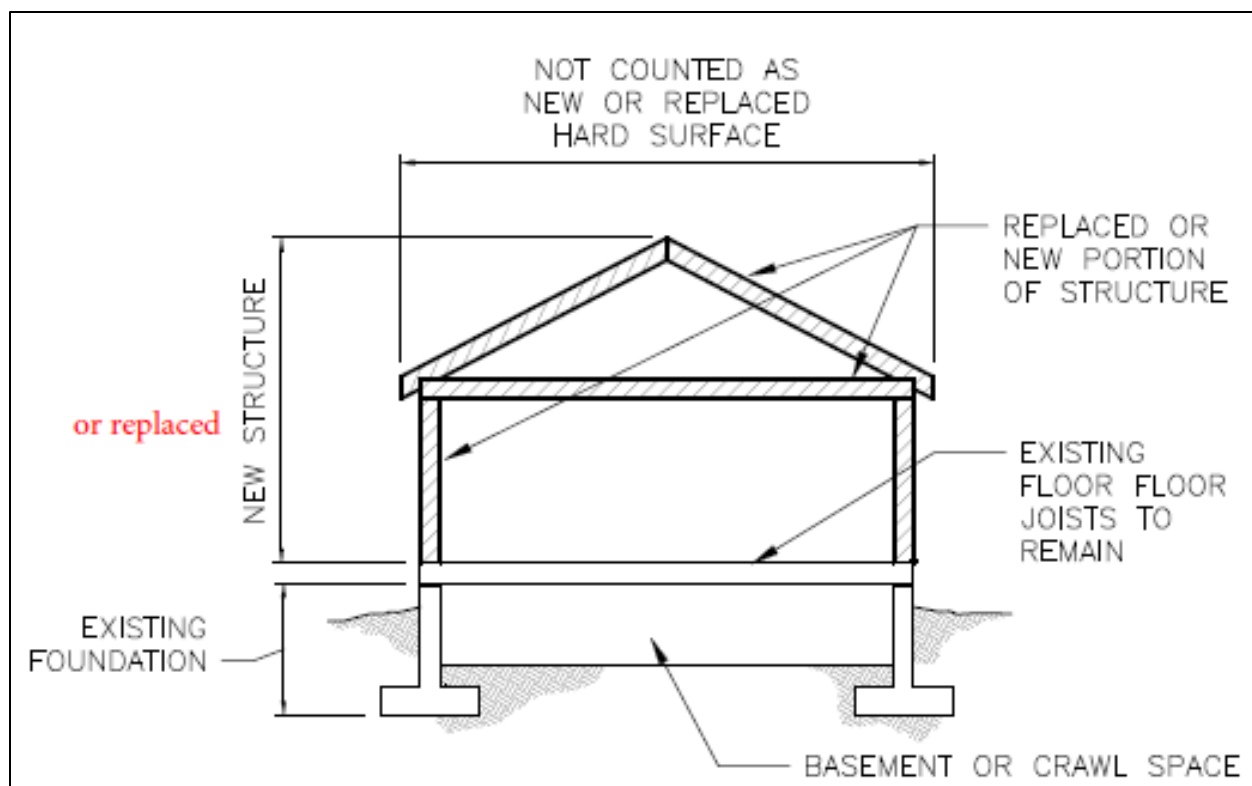


Figure 2.12. Example of Existing Hard Surface to Remain – Existing Floor Joists to Remain. (New Figure)

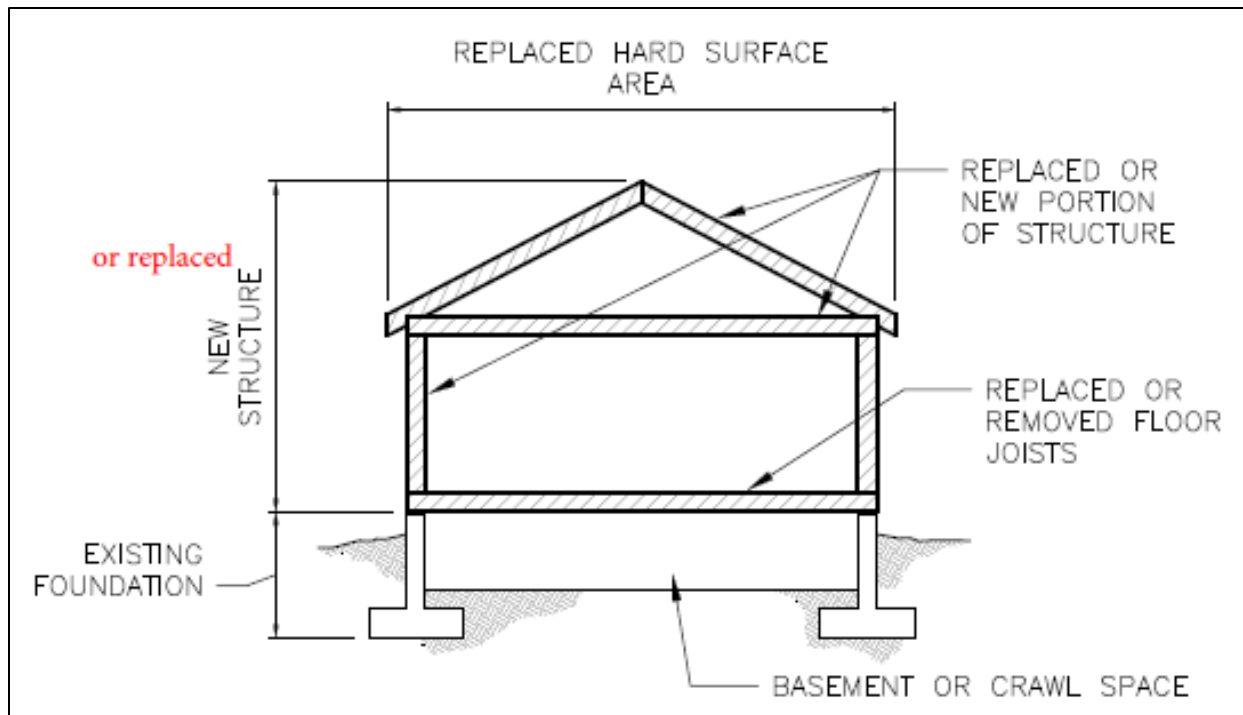


Figure 2.13. Example of Replaced Hard Surface – Flow Joists Removed or Replaced. (New Figure)

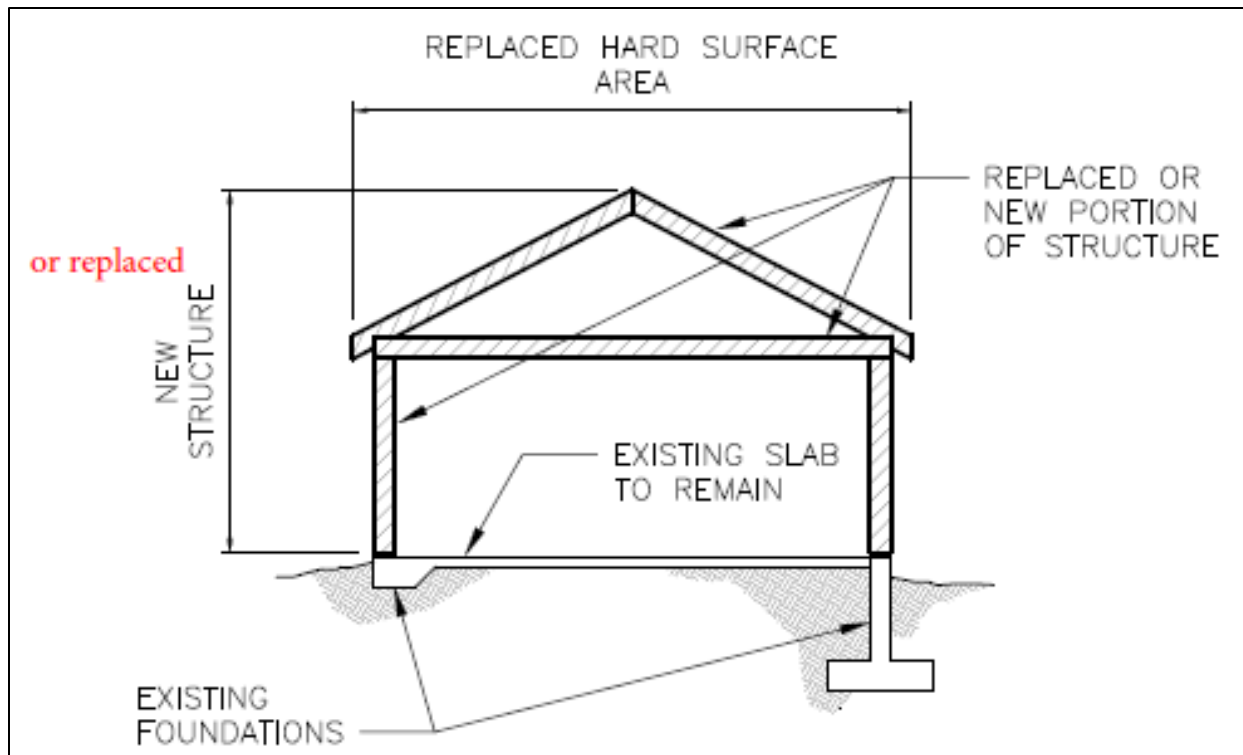


Figure 2.14. Example of Replaced Hard Surface – Structure Removed Down to Slab on Grade/Footings. (New Figure)

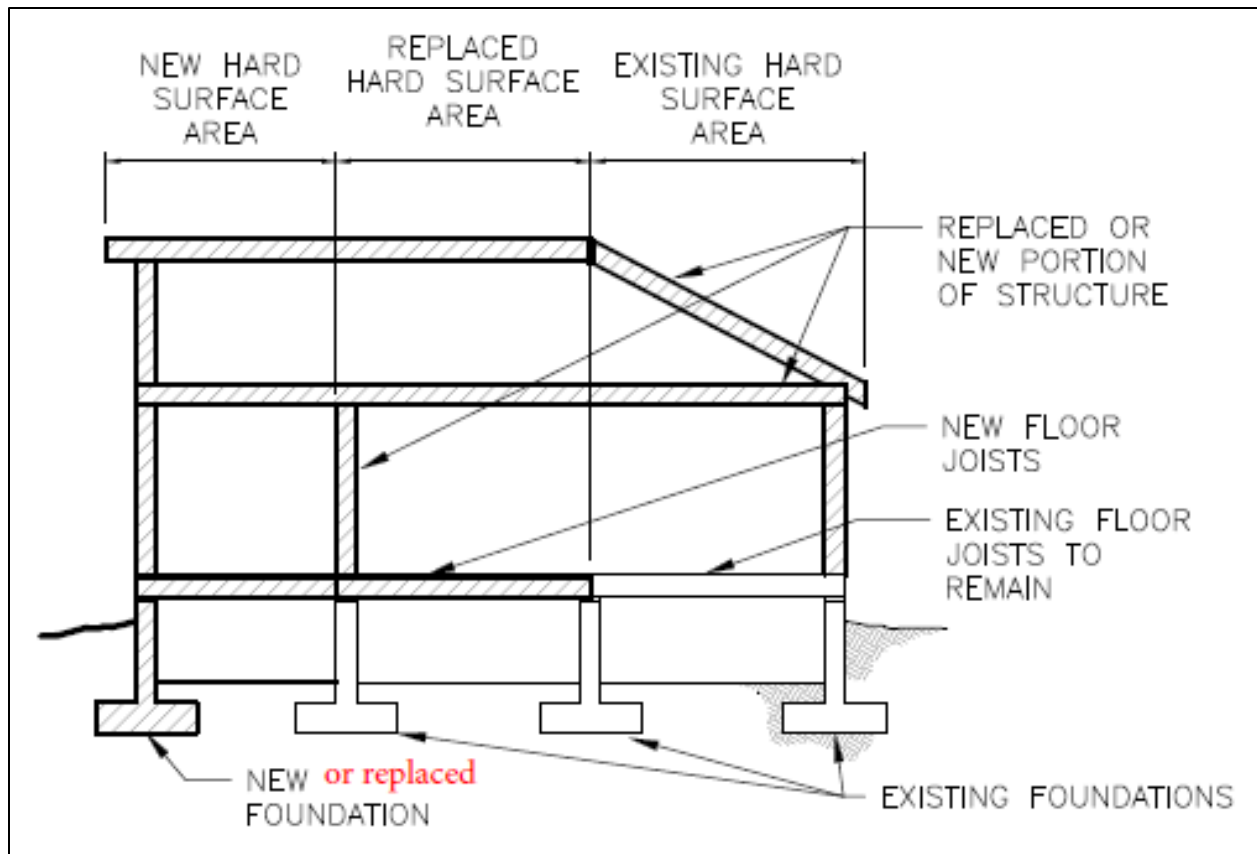


Figure 2.15. Example with New, Replaced and Existing Hard Surfaces. (New Figure)

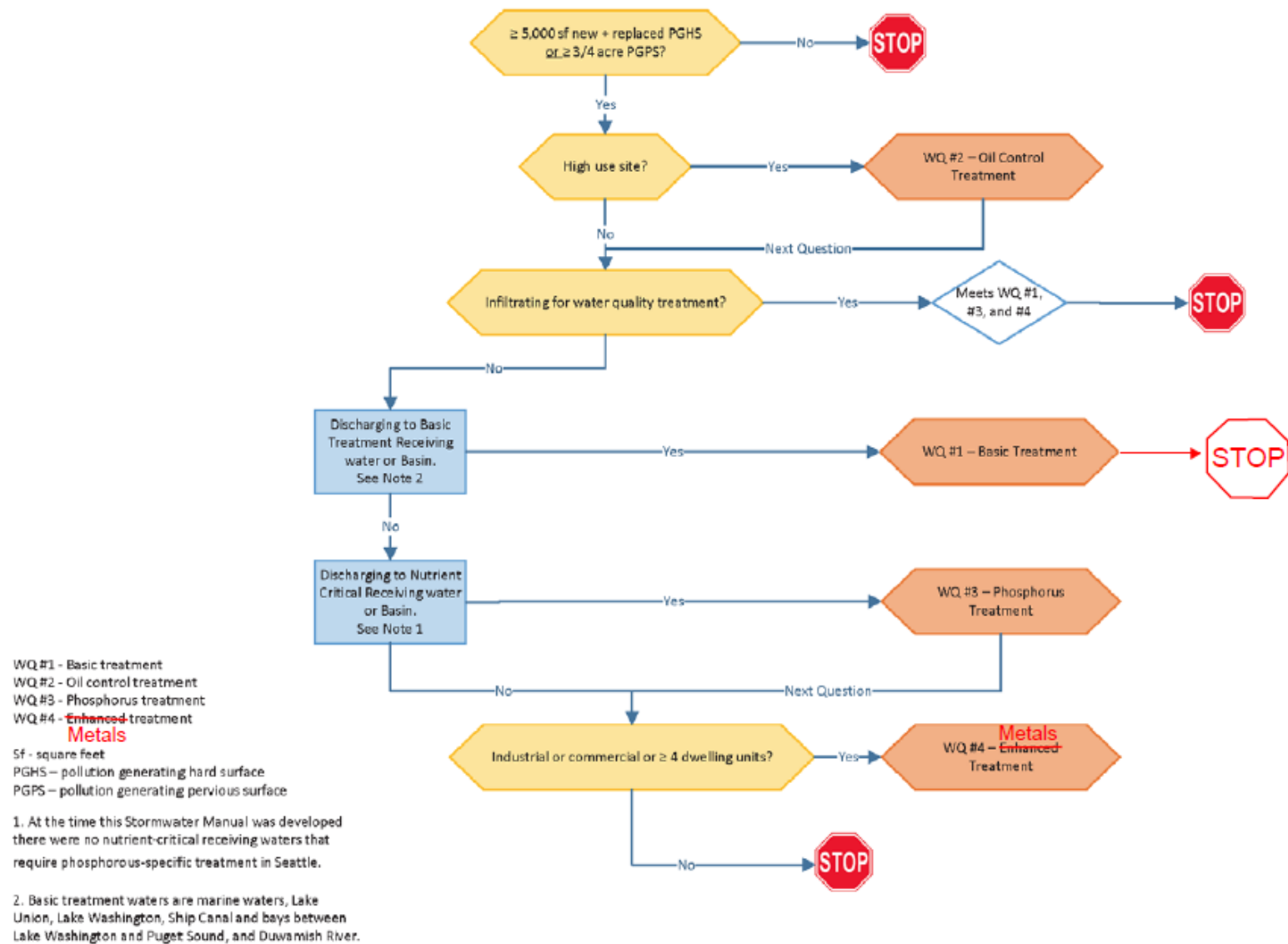


Figure 4.2C. Project Minimum Requirements for Parcel-Based Projects (continued).

Figure Redlines for Volume 3 – Project Stormwater Control July 2025 Review Draft

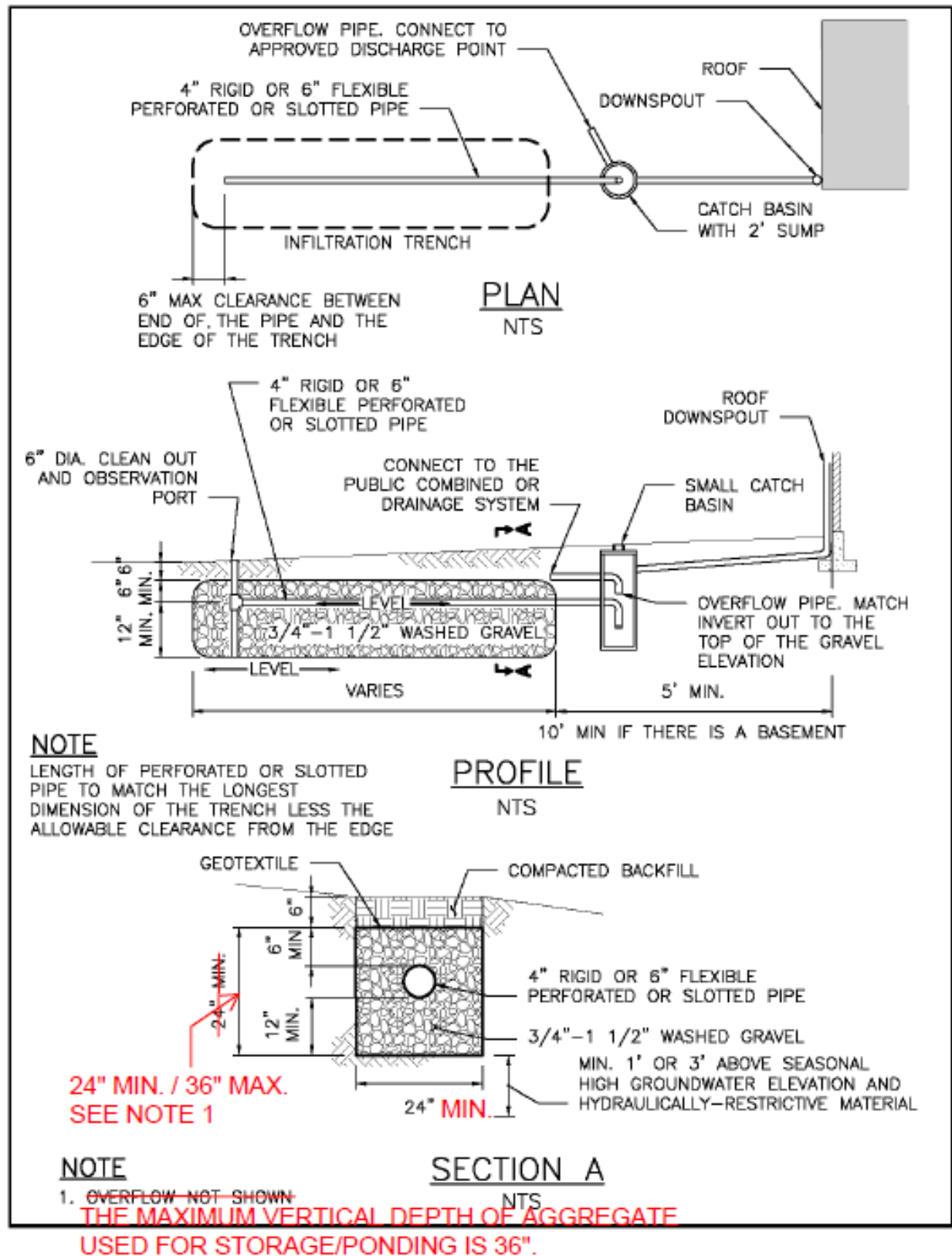


Figure 5.8. Typical Infiltration Trench Receiving Concentrated Flow.

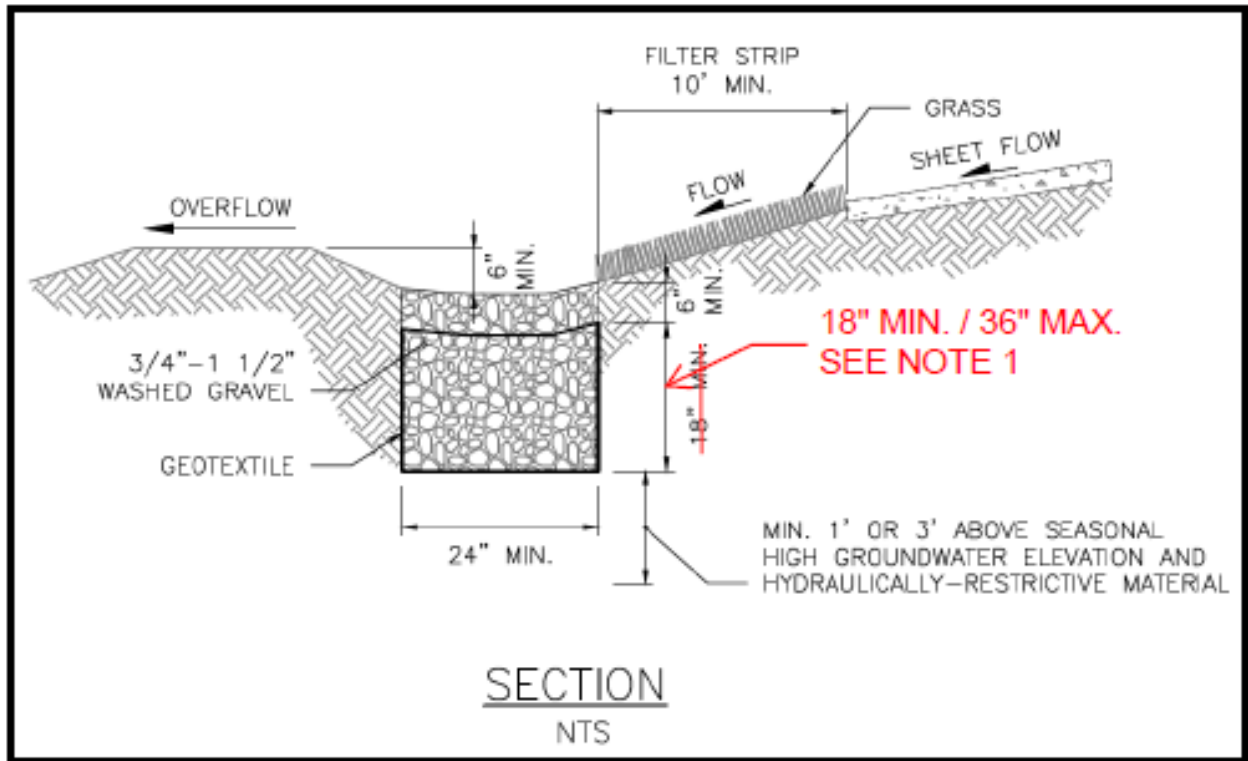


Figure 5.9. Typical Infiltration Trench Receiving Sheet Flow.

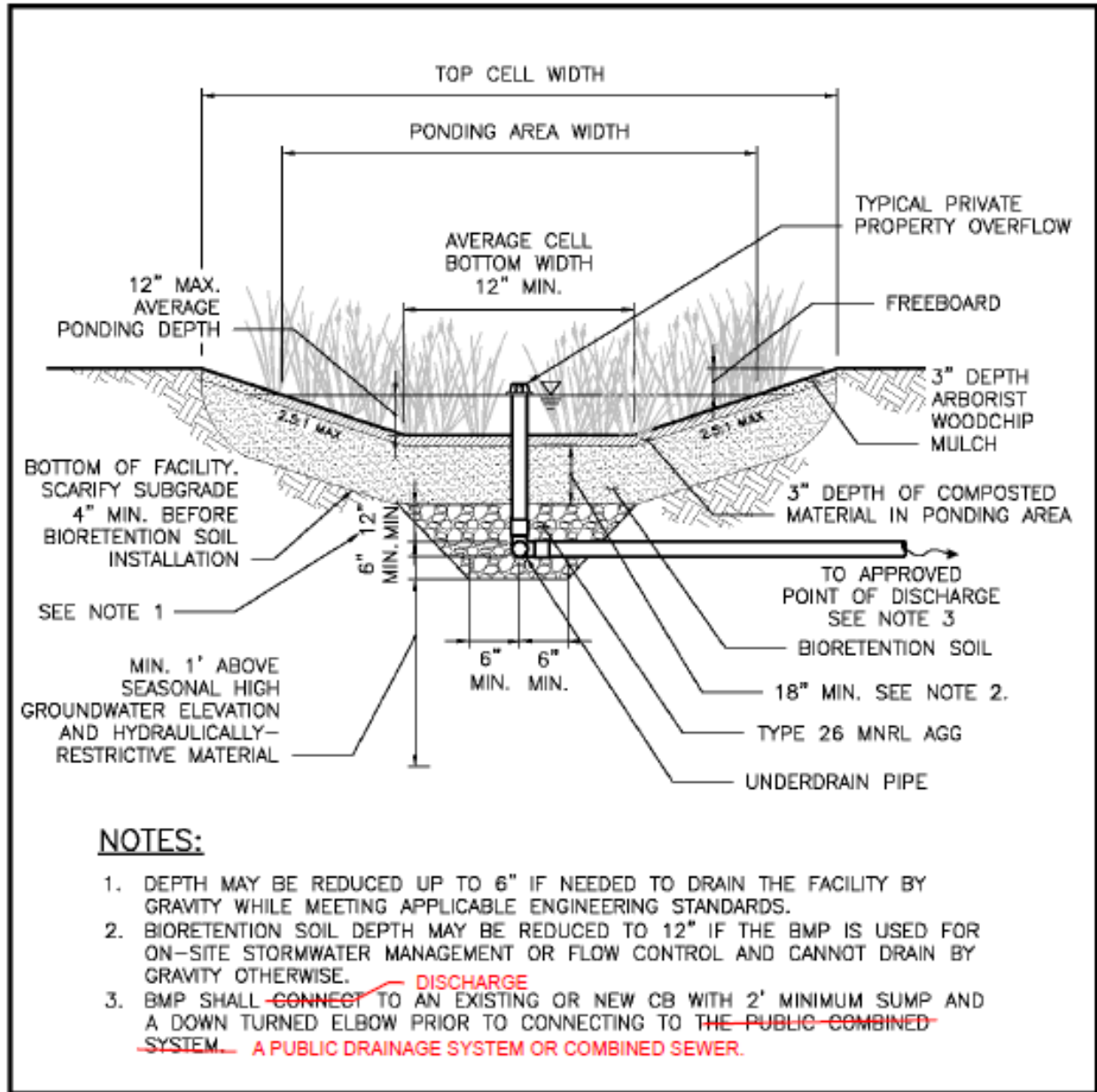


Figure 5.13. Infiltrating Bioretention Facility with Sloped Sides (with Underdrain).

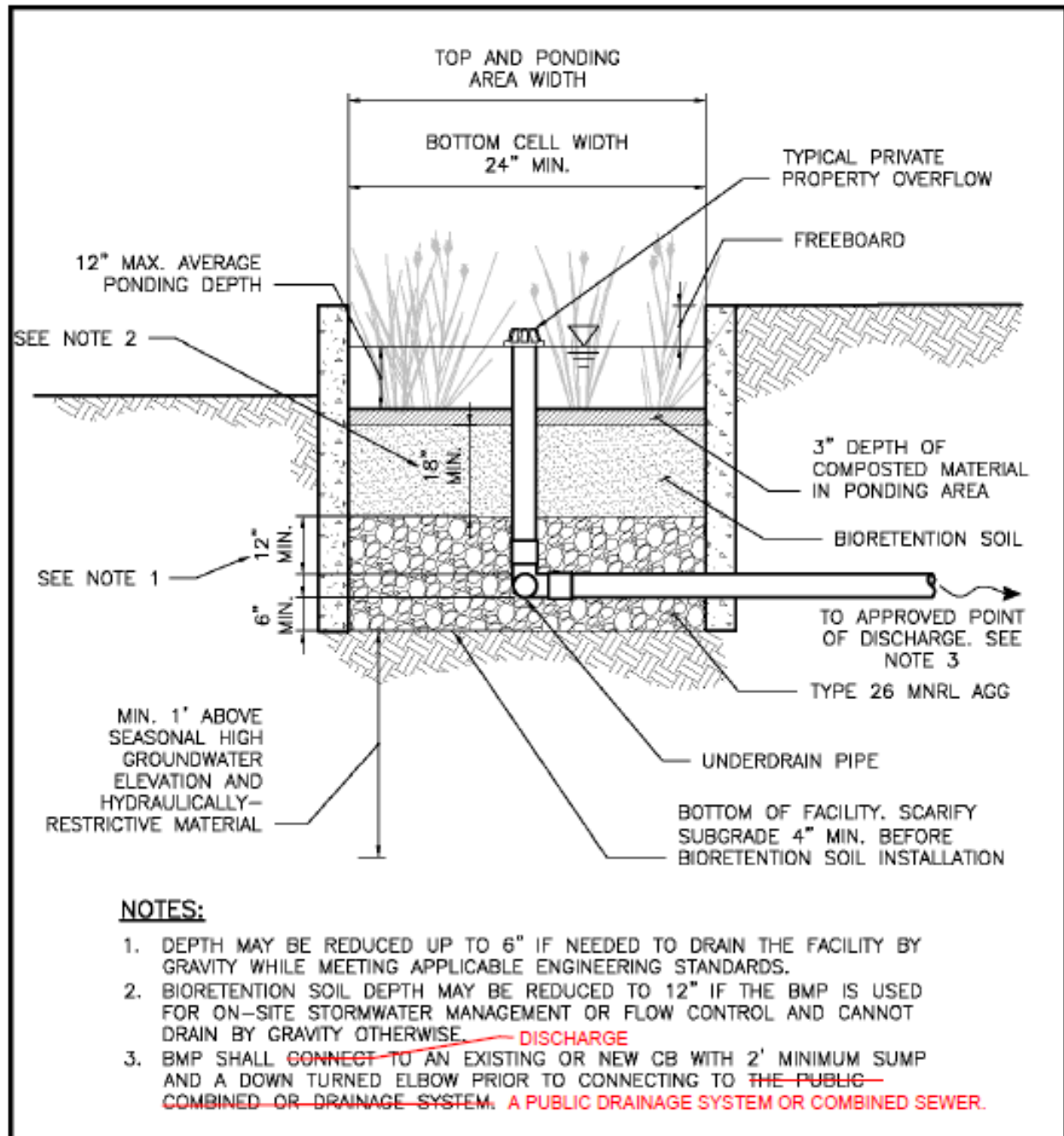


Figure 5.14. Infiltrating Bioretention Facility with Vertical Sides (with Underdrain).

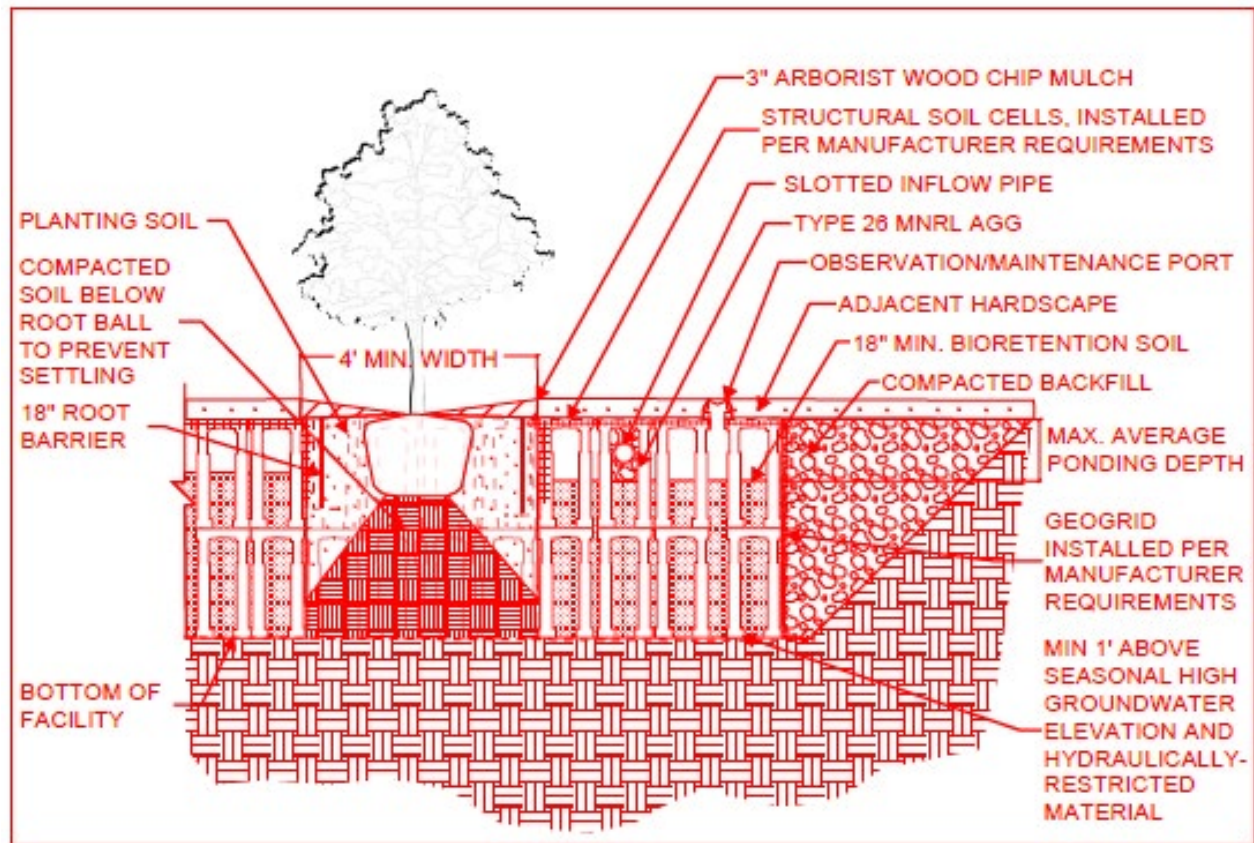


Figure 5.23. Infiltrating Structural Soil Cell BMP without Underdrain. (New Figure)

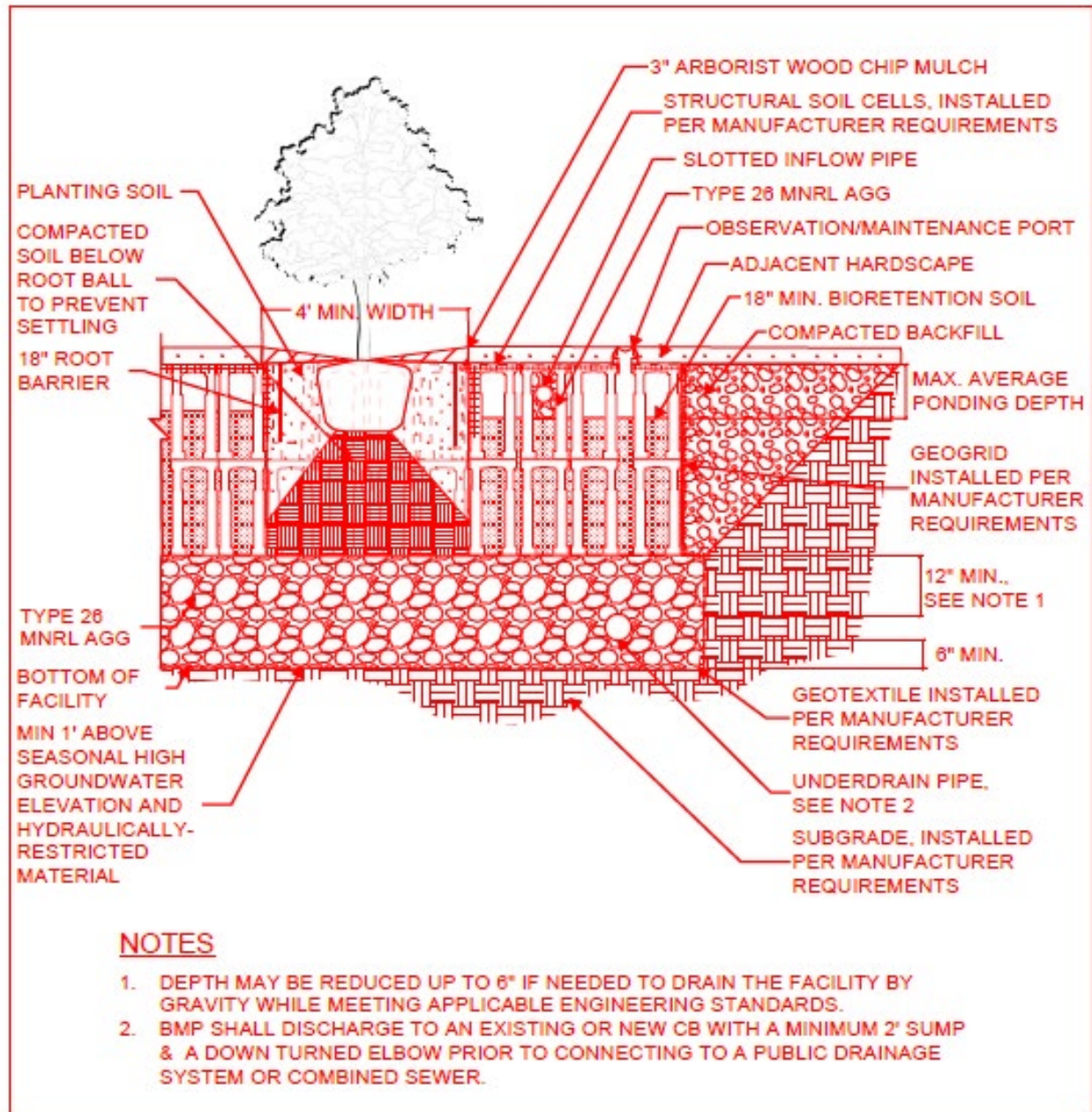


Figure 5.24. Infiltrating Structural Soil Cell BMP with Underdrain. (New Figure)

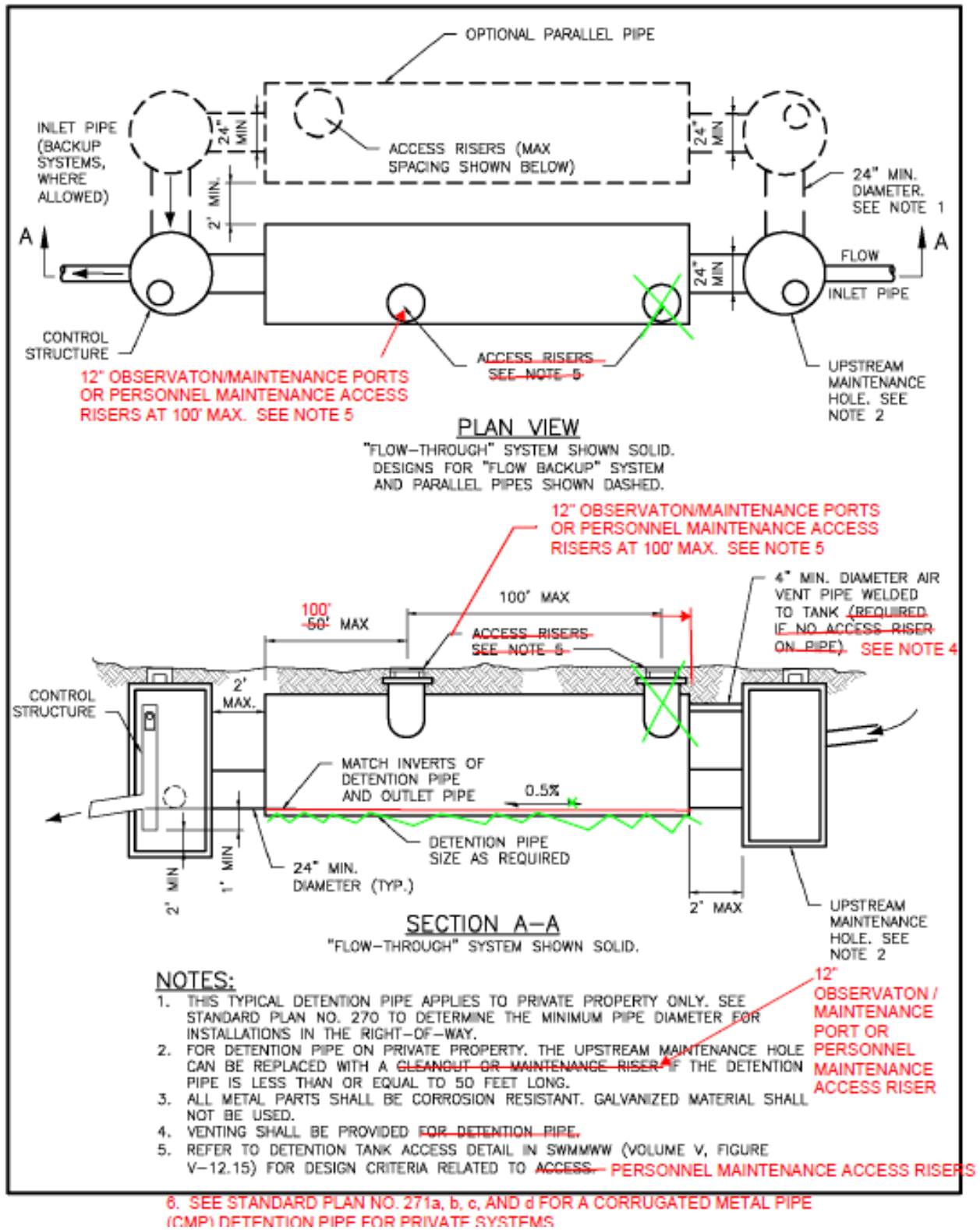


Figure 5.2628. Typical Private Property Detention Pipe.

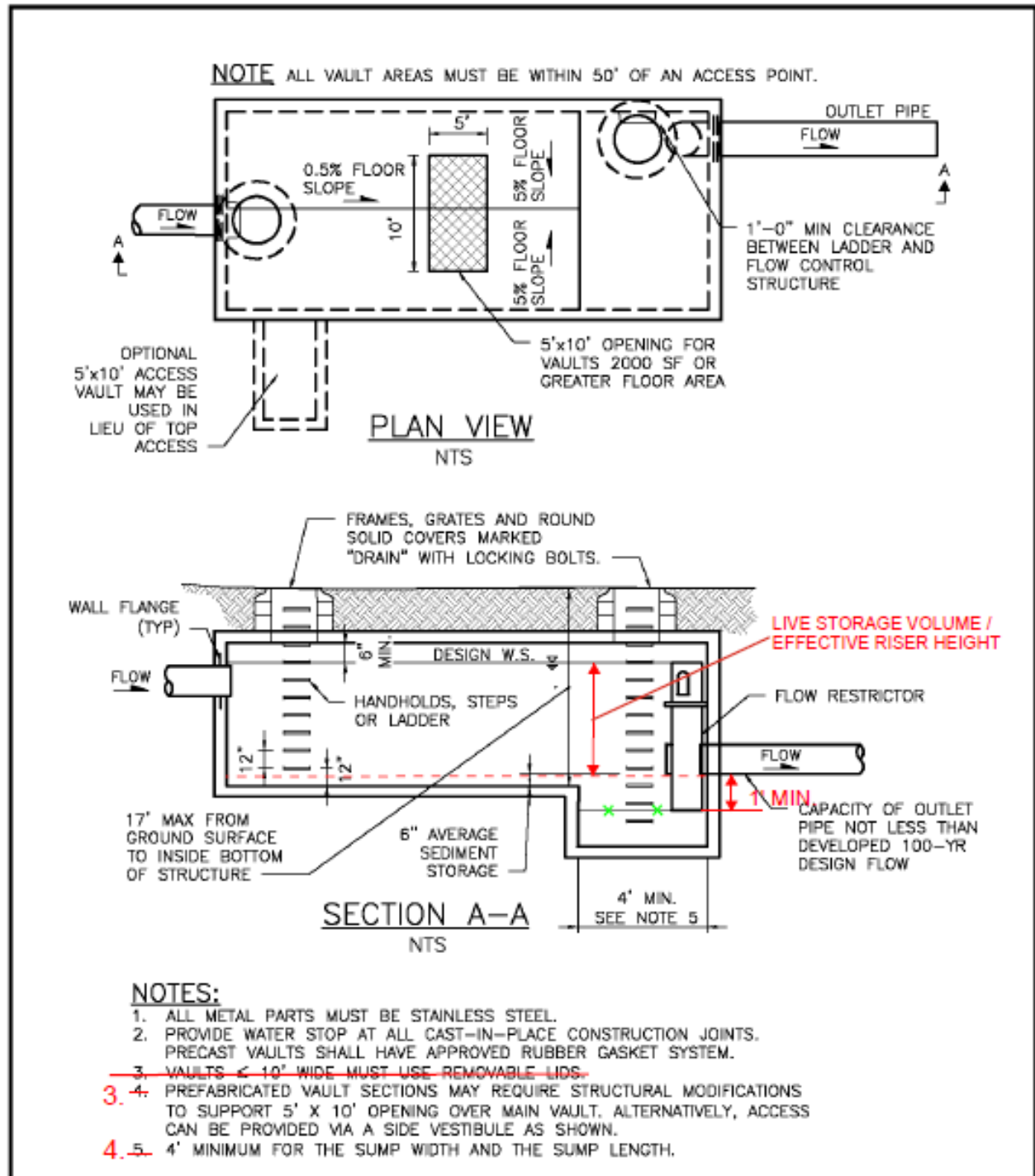


Figure 5.2729. Typical Detention Vault.

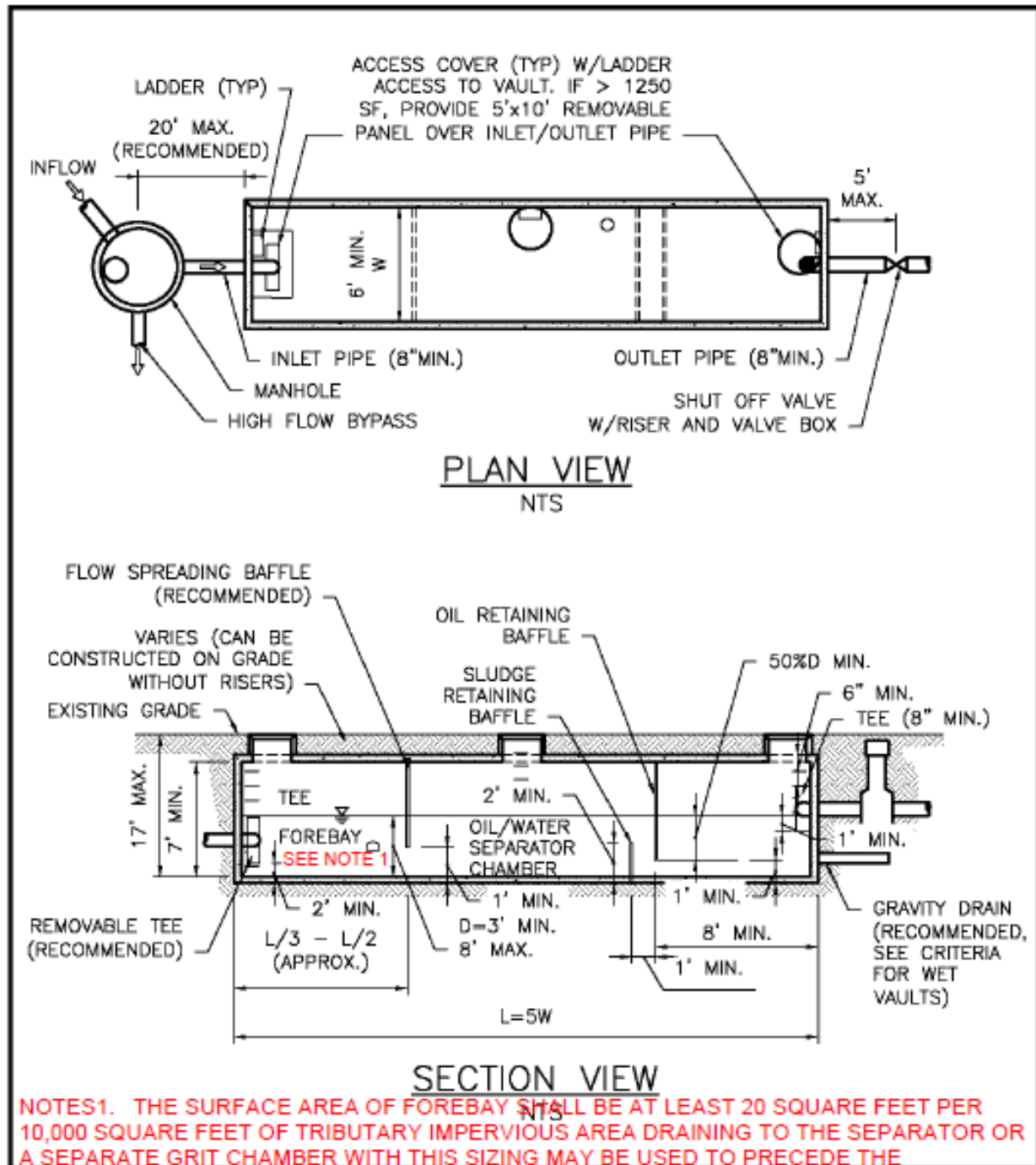


Figure 5.3335. Typical API (Baffle Type) Separator.

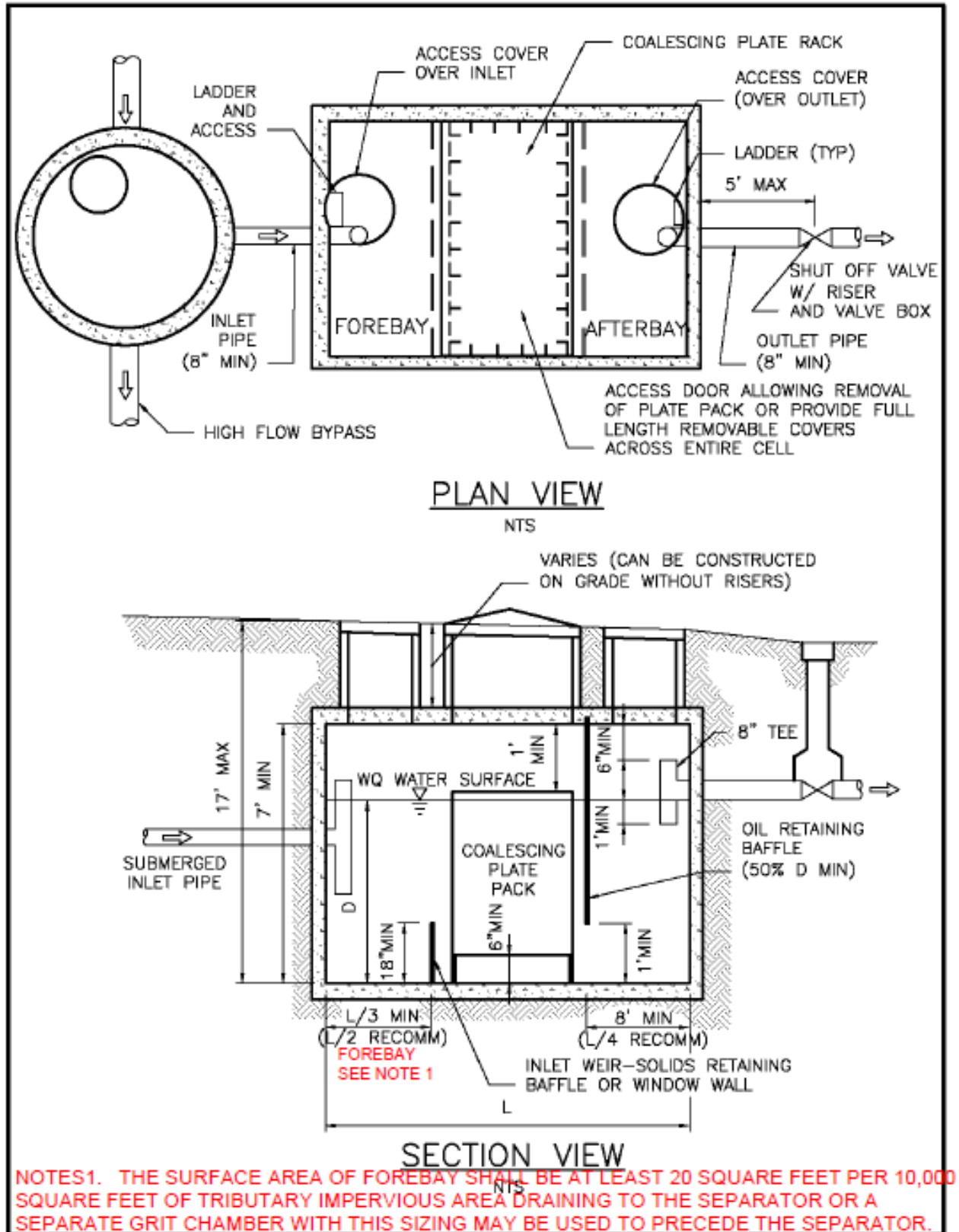


Figure 5.3436. Typical Coalescing Place Separator.

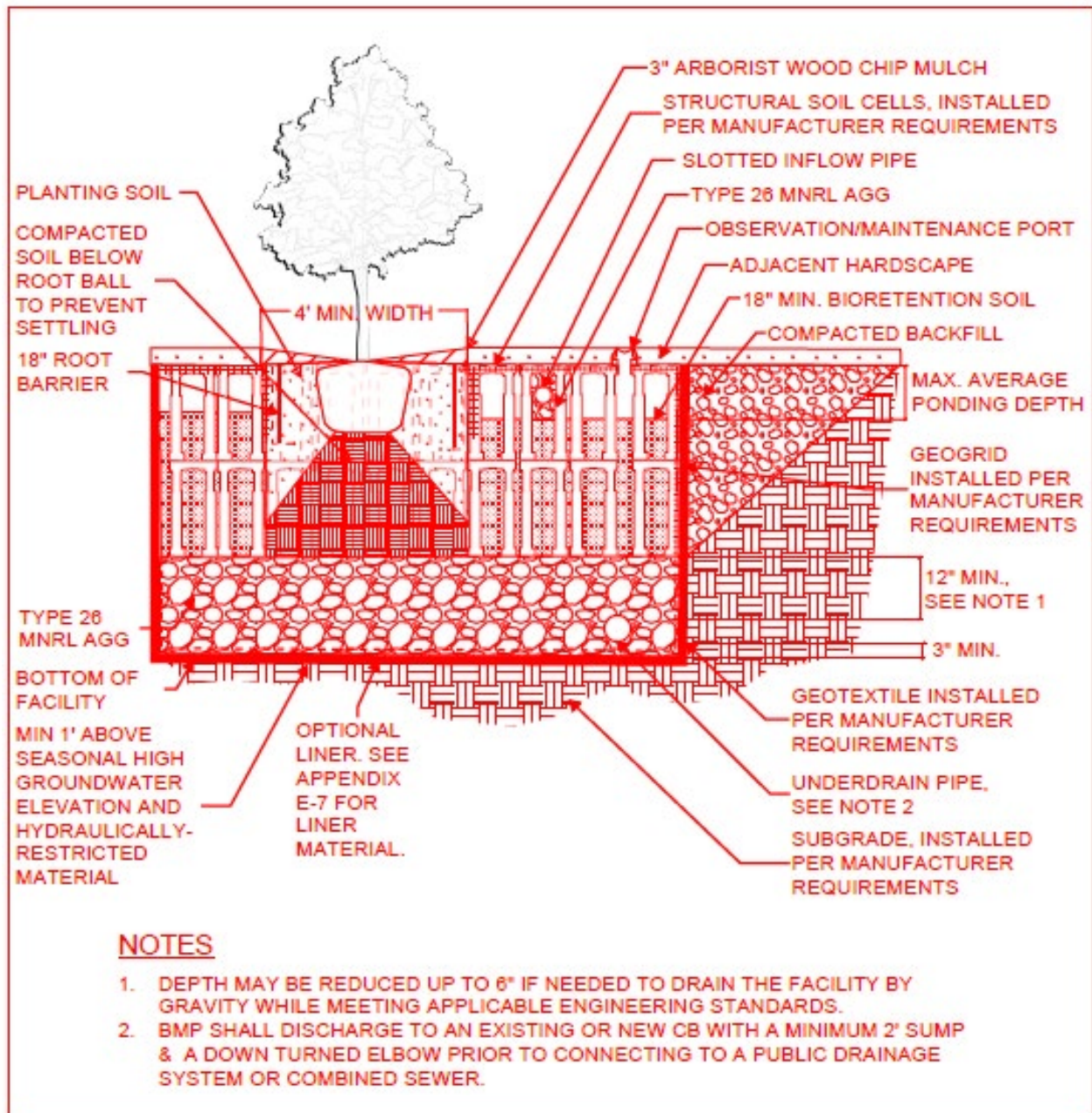


Figure 5.37. Non-infiltrating Structural Soil Cell BMP. (New Figure)

Figure Redlines for Volume 4 – Source Control July 2025 Review Draft



Figure 2. Example of a labeled used cooking oil tote located on a level surface with a secure lid.
(New Figure)

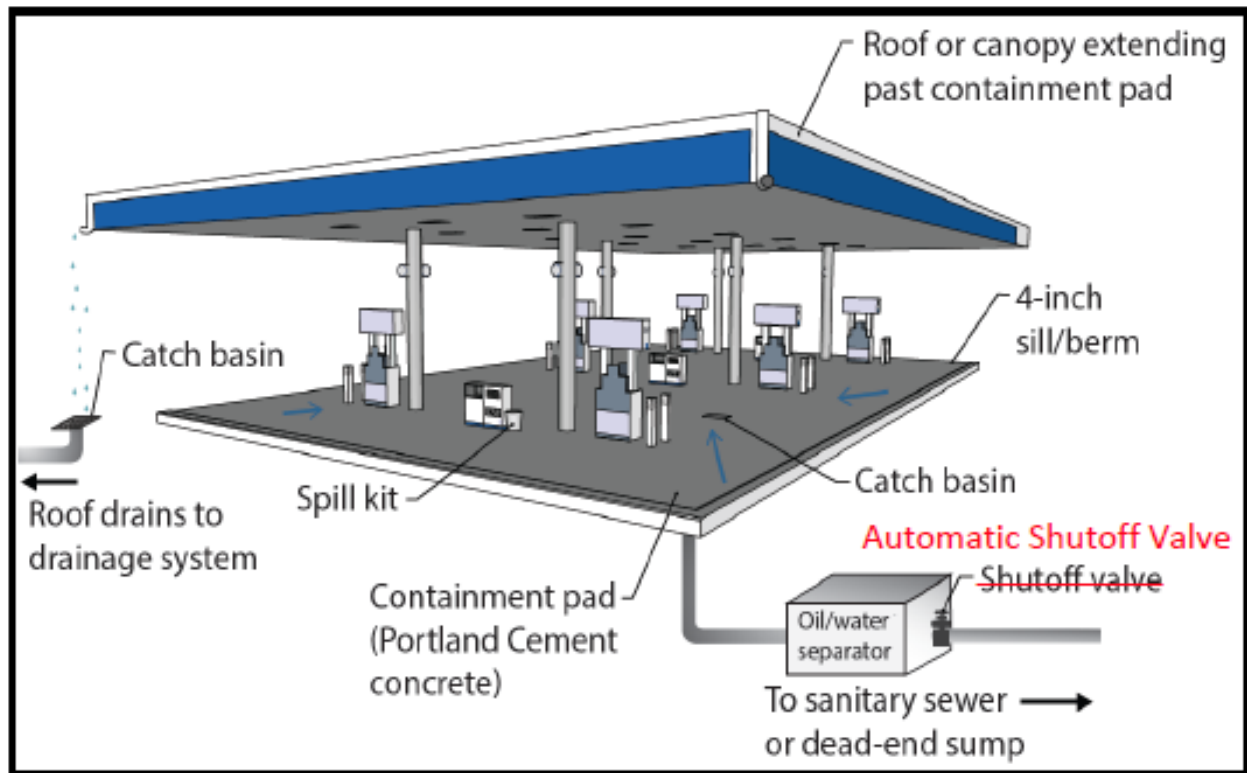


Figure 34. Fueling Island Schematic.